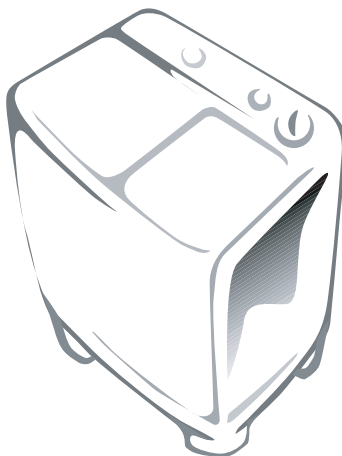


S A M S U N G

Owner's Instructions



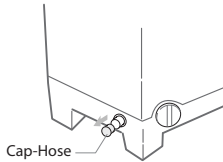
Before operating the unit, please read this manual thoroughly, and retain for future reference.

BEFORE USING THE WASHER	1
CAUTIONS	1
PRECAUTIONS WHEN OPERATING.	1
DESCRIPTION OF PARTS	2
CONTROL PANEL.	2
INSTALLATION	3
ENVIRONMENT	3
HOW TO CLEAN THE FILTER	3
CONNECTING THE DRAIN HOSE	3
CLEANING THE MACHINE	3
WASHING PROCEDURE.	4
TO WASH	4
SPIN DRY	4
RINSING	5
OVER FLOW RINSE	5
ADDITIONAL RINSE	5
LAUNDRY GUIDE.	6
MAINTENANCE.	6
TROUBLE SHOOTING	
SPECIFICATION	

Register your product at
www.samsung.com/global/register
CODE NO. : DC68-02206A-01

BEFORE USING THE WASHER

- In case of pump drained washer, remove the cap-hose from the drain hole.
- Take out personal belongings from pockets.



Caution

Check the pockets! Hairpins and coins cause damages to clothes and washing machine. They make noise and problems to the machine. Must check the pocket.



CAUTIONS

- **Be sure that the washer is grounded.**

To avoid electrical shock, use a metal pipe for the ground connection. But, don't ground the washer with gas pipes or telephone lines to avoid dangers of explosion or lightning strike.



- **Do not put your hands into the spin dryer basket when it is spinning.**

Your fingers can be caught by spinning laundry and damaged.



- **Never allow children to operate or play with the washer.**

Children playing with the washer may accidentally fall into the washing tub.



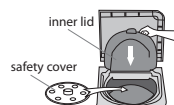
- **Disconnect the power cord from the power supply when not in use.**
- **Ventilation opening must not be obstructed by carpeting when the washing machine is installed on a carpeted floor.**
- **If the supply cord of this appliance is damaged, it must only be replaced by a repair shop appointed by the manufacturer, because special purpose tools are required.**
- **To avoid overfilling and damages this appliance must be filled with the operator present using a moderate water supply pressure only.**
- **For washing machines with ventilation openings in the base, that a carpet must not obstruct the openings.**

PRECAUTIONS WHEN OPERATING

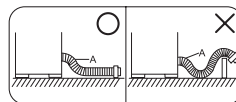
- **Don't use excessively hot water. (50°C or more)**
Plastic parts may be deformed or damaged. Also, clothing may be deformed or decolored.
- **Before washing, check all pockets.**
If nails or pins remain in pockets, they may damage the washer or clothes.
- **Close the water tap a little if the water pressure is too high.**
- **To avoid water splashes, close the wash tub lid.**
- **Never splash water on the control panel.**

- **Be sure to cover with the inner cover on laundry before spinning.**

This prevents laundry from being tossed out and damaged.

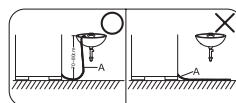


- **Be sure lay the drain hose(A) down.**



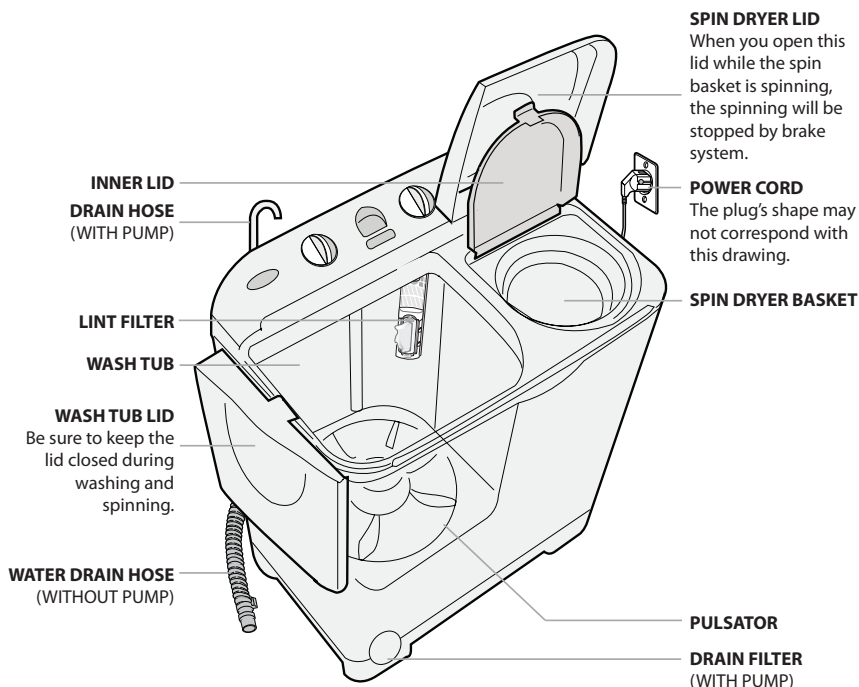
(WITHOUT PUMP)

- **Be sure place the drain hose(A) in sink or bath about 70~80cm above the ground.**



(WITH PUMP)

DESCRIPTION OF PARTS



CONTROL PANEL

1. WASH SELECTOR

This is used to select wash action.

2. WASH TIMER

This is used to set the wash time, 1-15 minutes.

3. CYCLE SELECTOR

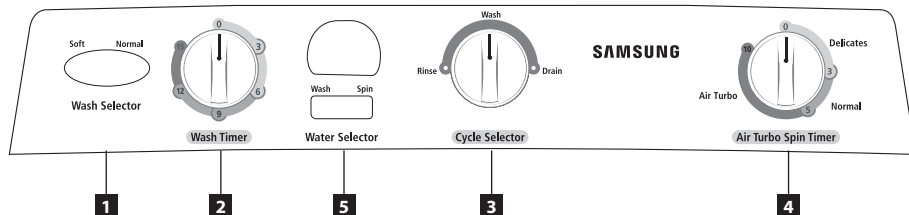
This is used to select the Washing / Rinsing or draining.

4. AIR TURBO SPIN TIMER

This is used to set the spin time, 1-10 minutes.

5. WATER SELECTOR

During washing, WATER SELECTOR KNOB should be selected to wash. During spin rinsing, WATER SELECTOR KNOB should be selected to spin.



INSTALLATION

ENVIRONMENT

Leave some space

Space at least 15cm between the washer and the wall.

Place the washer on a sturdy flat surface.

If the washer is placed on an uneven or weak surface, noise or vibration may be occurred. (Allowable is 2°)

Never install the washer near water.

Do not place the washer in steamy rooms or where the washer is directly exposed to rain. Moisture may destroy the electrical insulation and cause an electrical shock hazard.

Avoid direct sunlight or heating devices.

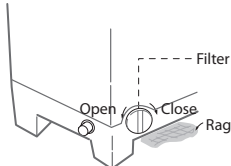
As plastic and electrical components are affected by direct heat, never place the washer near heaters, boilers, etc.

Do not place under direct sunlight.

HOW TO CLEAN THE FILTER (In case drain pump)

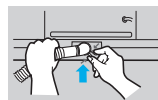
1. Place a rag under the washer filter not to wet the floor.
2. Rotate the filter counterclockwise and pull out the filter.
3. Remove dirt and rotate the filter clockwise until it locks in position.

Remark : Should be cleaned Filter at least 1 time a week.



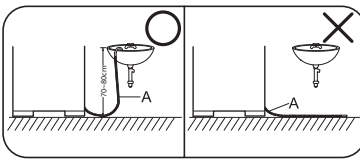
CONNECTING THE DRAIN HOSE

Insert the drain hose(a) and push it tightly to be connected as arrow direction.



(WITHOUT PUMP)

Install the drain hose about 70~80cm above the ground for pump model.

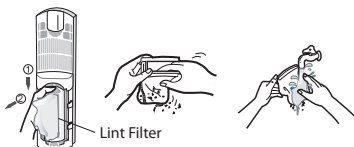


CLEANING THE MACHINE

CLEENING THE LINT FILTER

If the dregs are filled up in the lint filter after finishing the wash, push down(1) and pull it out(2) as shown in figure.

Remove the collected lint and rinse the filter net.



CLEANING THE WASH TUB

Wipe off stains on the cabinet and operation panel with soft cloth.

Do not use benzene, thinners, cleanser, or wax, nor scrub the washer with a brush.

Painted surfaces or plastic parts will be damaged.

OVERFLOW FILTER

Pull the upper side of the overflow filter with two fingers into the hole 'A' in the direction of arrow as shown in the figure.

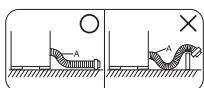


WASHING PROCEDURE

TO WASH

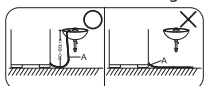
1. Before starting washing, check the following;

- Connect the water supply hose and open the water tap.
- Connect the power cord to the power supply outlet.
- Lay the drain hose(A) down toward a sinkhole.



(WITHOUT PUMP)

- Place the drain hose(A) in sink or bath about 70~80cm above the ground.



(WITH PUMP)

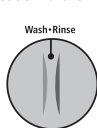
2. Set the WASH SELECTOR KNOB to the desired mode.



Wash Selector

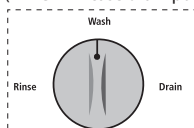
3. Set the CYCLE SELECTOR KNOB to 'WASH-RINSE'.

(In case no drain pump) ('WASH' in case drain pump)



Cycle Selector

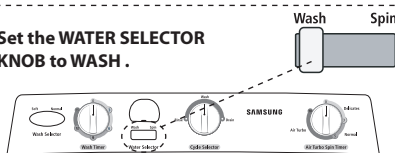
(Without pump)



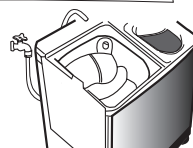
Cycle Selector

(With pump)

4. Set the WATER SELECTOR KNOB to WASH .



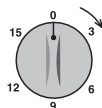
5. Load laundry in the wash tub.



6. Fill water in the wash tub and add the detergent.



7. Set the WASH TIMER 1-15 minutes.



Wash Timer

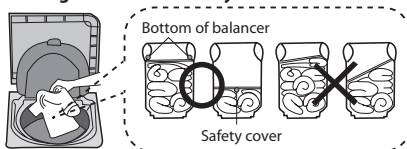
8. After washing, set the CYCLE SELECTOR KNOB to 'DRAIN' for drain.



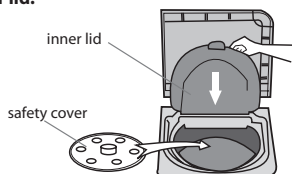
Cycle Selector

SPIN DRY

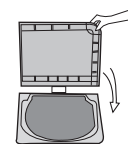
1. Transfer the clothes into the spin basket and arrange the clothes evenly.



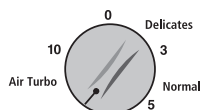
2. Be sure to attach the safety cover and close the inner lid.



3. Close the spin dryer lid.



4. Set the AIR TURBO SPIN TIMER 1-10 minutes.

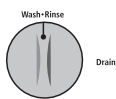


Air Turbo Spin Timer

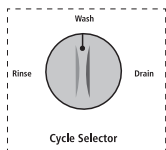
5. Incomplete spinning. (Severe vibration or unbalance) See "When you load ..." on page 6.

RINSING

1. Set the **CYCLE SELECTOR KNOB** to 'WASH RINSE'.
(In case no drain pump) ('WASH' in case drain pump)

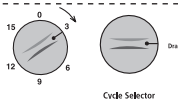


Cycle Selector
(Without pump)



Cycle Selector
(With pump)

2. Supply the proper amount of water as not to overflow the top of the washing tub.

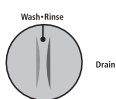


3. Set the **WASH TIMER** 2~3 minutes.
4. Drain the water. Set the **CYCLE SELECTOR KNOB** to 'DRAIN'.
5. Repeat this cycle until drain water is clean. (2~3 cycles)
6. In case no drain pump.
 - Be sure lay the drain hose down.
- In case drain pump.
 - Be sure place the drain hose in sink or bath.

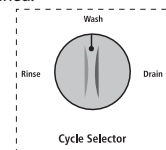
OVER FLOW RINSE

1. Keep supplying water

Adjust water pressure to ensure that the amount of water supplied does not exceed that water drained.



Cycle Selector
(Without pump)



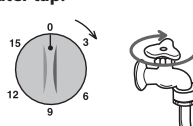
Cycle Selector
(With pump)

2. Set the **WASH TIMER** 6~8 minutes.



Wash Timer

3. As soon as the **WASH TIMER** shuts off, turn off the water tap.



Wash Timer

4. Set the **CYCLE SELECTOR KNOB** to 'DRAIN'.

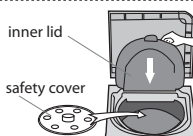


Cycle Selector

ADDITIONAL RINSE

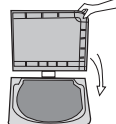
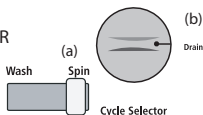
After rinsing you can select this course for more effective rinse (Don't select only this course for rinse.)

- 1 Load the laundry evenly into the spin basket.



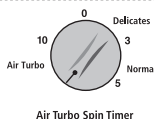
- 4 After stopping water supply, cover the laundry with safety cover and close the inner lid.

- 2 Set the **WATER SELECTOR KNOB** to SPIN (a) and **CYCLE SELECTOR KNOB** to 'DRAIN'(b).



- 5 Close the spin dryer lid.

- 3 Supply water for about 1 minute. Adjust the water flow to prevent overflow from the wash tub.



Air Turbo Spin Timer

- 6 Set the **AIR TURBO SPIN TIMER** 2~3 minutes.

LAUNDRY GUIDE

WASHING TIME

KINDS OF CLOTHING	WASHING TIME	WASHING SELECTION
Extremely solid heavy fabric	10 to 15 minutes	NORMAL
Linen, cotton, etc.	8 to 10 minutes	
Ordinary clothes (underwear, etc.)	7 minutes	SOFT
Slightly soiled synthetic fiber	2 to 5 minutes	
100% wool, mixed wool knitting, thin synthetic fiber with tags indicating hand washing	2 to 5 minutes	

SPIN DRY TIME

TIME	TYPE OF LAUNDRY
1 min.	Thin (synthetic fiber)
1~2 min.	wool
3~5 min.	cotton
5 min.	thick (cotton)
10 min. (Air Turbo)	thick (cotton)

DETERGENT

AMOUNT OF DETERGENT	WATER LEVEL
37 g	Low (37 L)
45 g	Mid (45 L)
54 g	High (54 L)

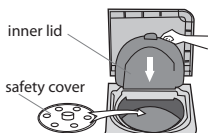
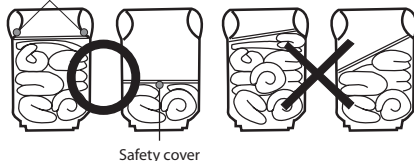
The amount of detergent is average. Follow the instruction detergent printed on the package for amount of detergent. Choose the amount of detergent depending on the fabric type.

MAINTENANCE

WHEN YOU LOAD THE LAUNDRY INTO THE SPIN BASKET.

Press the laundry evenly and put the safety cover into the spin basket drum as shown in the figure.

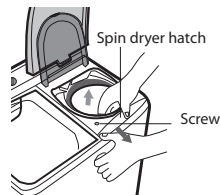
Bottom of balancer



TO PICK OUT THE CLOTHING WHICH HAS FALLEN BETWEEN THE BASKET AND TUB.

For safety, pull the power supply plug out of the socket.

1. Disassemble a screw from the spin dryer hatch.
2. The spin dryer hatch is fixed to the brim by the concave and convex parts at two places. Expand the concave and convex parts, and pull up the spin dryer hatch to remove it.
3. Remove the clothing
4. Close the spin dryer hatch. Push in hatch firmly until the catch at the front is engaged securely.



TROUBLE SHOOTING

TROUBLE	CHECK POINT	TROUBLE	CHECK POINT
1. The washer does not work.	Check that the power cord is connected to a power outlet well. Power stoppage?	4. Water dose not drain.	In case no drain pump. - Be sure lay the drain hose down. In case drain pump. - Be sure remove the cap-hose from the drain hole. • See "Before using..." on page 1.
2. Clothes will not move freely.	Is the laundry overloaded?	5. The spin dryer basket will not run.	Is the spin dryer lid closed completely? Are laundry (socks, etc.) falling out of the spin dryer basket and clinging to the axle? • See "To pick out..." on page 6.
3. Incomplete spinning. (Severe vibration or unbalance.)	Are the laundry arranged evenly? • See "When you load..." on page 6.	6. The water drains out immediately.	In case no drain pump. - Is the Cycle Selector set to drain? - Is the drain hose clogged with scrap? • Hang up drain hose over the drain hose hook. Half fill the wash tub with the water and try for drain again. (Scrap will be removed by water drain pressure.) In case drain pump. - Is the drain hose hung about 70~80 cm above the ground? • See "Connecting the drain..." on page 3.

SPECIFICATION

DIMENSIONS (W x D x H)mm		792 x 465 x 951
WATER PRESSURE		0.05~0.78 MPa 0.5 ~ 8.0 kg-f/cm ²
WEIGHT	With out pump	29 kg
	With pump	31 kg
EXTRACTION EFFICIENCY		50 %
STANDARD QUANTITY OF WATER		54 l
MOTOR INPUT		Washing 330 W / Spinning 160 W
MOTOR MAX INPUT		480 W
RATING TIME		Washing 1 Hour / Spinning 15 minutes

Contact SAMSUNG WORLD WIDE

If you have any questions or comments relating to Samsung products, please contact the SAMSUNG customer care centre.

Country	Customer Care Center ☎	Web Site
AUSTRALIA	1300 362 603	www.samsung.com/au
INDIA	3030 8282, 1600 1100 11	www.samsung.com/in
MALAYSIA	1800-88-9999	www.samsung.com/my
PHILIPPINES	1800-10-SAMSUNG (7267864)	www.samsung.com/ph
RUSSIA	8-800-200-0400	www.samsung.ru
SINGAPORE	1800-SAMSUNG (7267864)	www.samsung.com/sg
SOUTH AFRICA	0860 7267864 (SAMSUNG)	www.samsung.com/za
VIETNAM	1 800 588 889	www.samsung.com/vn